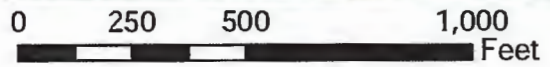


Sources: Esri, HERE, DeLorme, TomTom, Intermap, increment P Corp., GEBCO, USGS, FAO, NPS, NRCAN, GeoBase, IGN, Kadaster NL, Ordnance Survey, Esri Japan, METI, Esri China (Hong Kong), swisstopo, MapmyIndia, © OpenStreetMap contributors, and the GIS User Community



	Nibletts Bluff Road Bridge	
	<b>FIGURE 1</b> <b>SITE LOCATION MAP</b> PERMIT APPLICATION LANCON ENGINEERS, INC. NIBLETT'S BLUFF ROAD BRIDGE CALCASIEU PARISH, LOUISIANA	
Drawn By: CRH	Date: 08/07/18	AES Project # 11482
Checked By: CBJ	Date: 08/07/18	Revised:

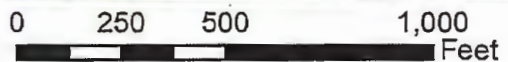
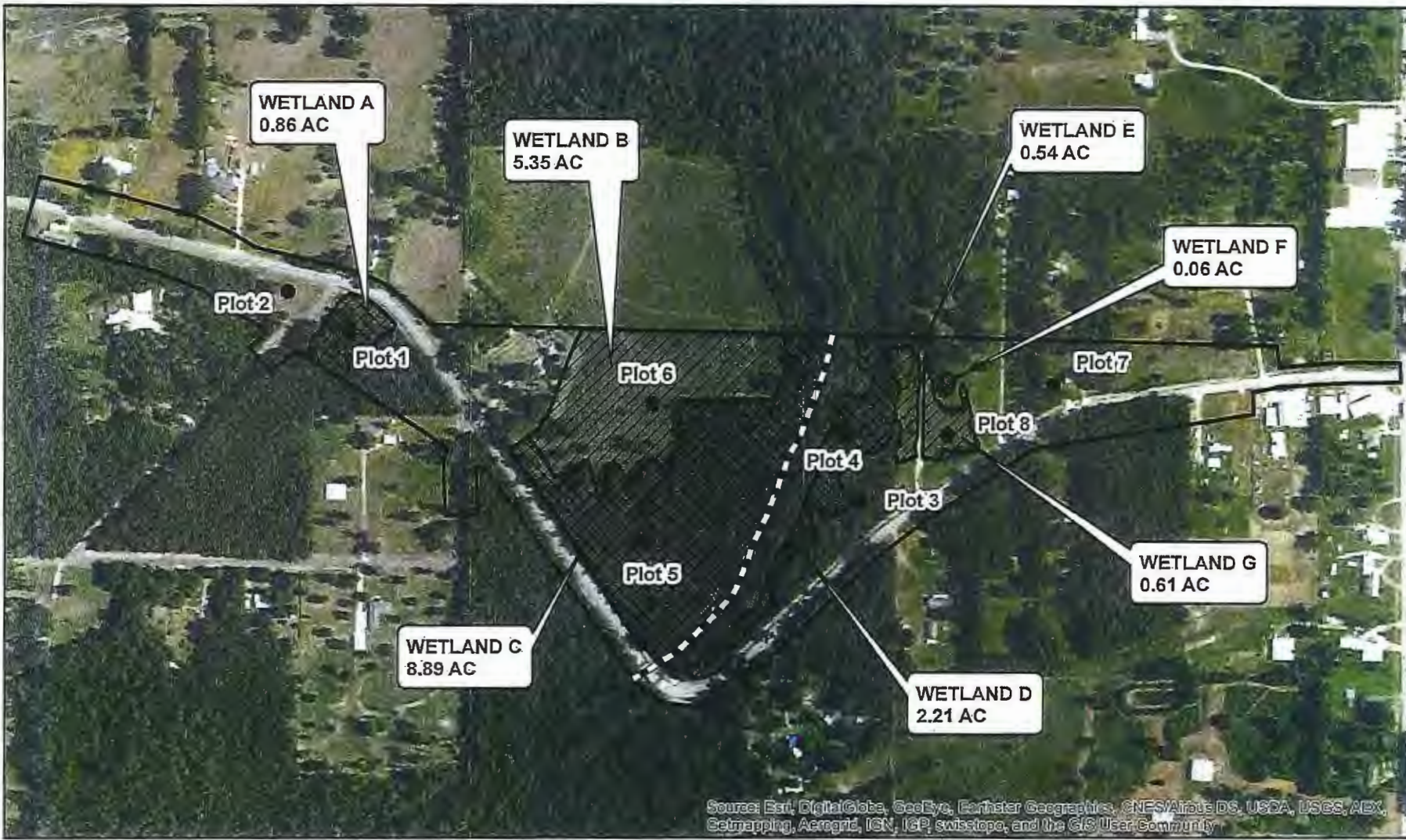


	NON-WETLAND (8.77 AC)
	WETLAND IMPACT (2.93 AC)
	GUM SLOUGH



	Nibletts Bluff Road Bridge	
	<b>FIGURE 2</b> <b>SITE DIAGRAM</b> PERMIT APPLICATION LANCON ENGINEERS, INC. NIBLETTS BLUFF ROAD BRIDGE CALCASIEU PARISH, LOUISIANA	
Drawn By: CRH	Date: 08/07/18	AES Project # 11482
Checked By: CBJ	Date: 08/07/18	Revised:





	NON-WETLANDS (27.0 AC)
	WOODED WETLANDS (12.0 AC)
	WET PASTURE (6.5 AC)
	WATERS (1,272.6 LINEAR FT)



Revised 01/05/2017

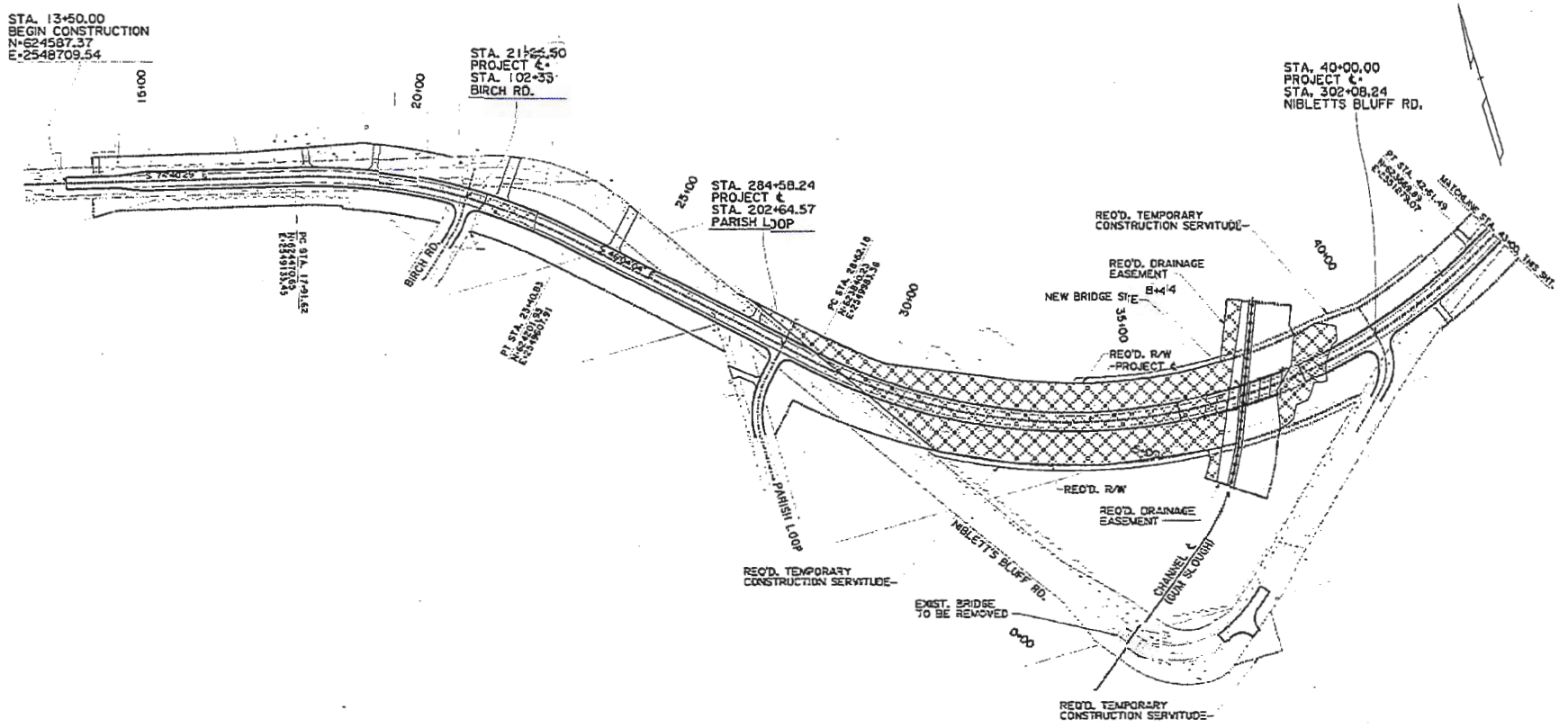
	Nibletts Bluff Road Bridge	
	<b>FIGURE 2</b> <b>SITE DIAGRAM</b> WETLAND DELINEATION LANCON ENGINEERS, INC. NIBLETTS BLUFF ROAD BRIDGE CALCASIEU PARISH, LOUISIANA	
Drawn By: CRH	Date: 6-24-16	AES Project # 11482
Checked By: CBJ	Date: 6-24-16	Revised:

STA. 13+50.00  
BEGIN CONSTRUCTION  
N=524587.37  
E=2548709.54

STA. 21+55.50  
PROJECT &  
STA. 102+33  
BIRCH RD.

STA. 40+00.00  
PROJECT &  
STA. 302+08.24  
NIBLETT'S BLUFF RD.

STA. 284+58.24  
PROJECT &  
STA. 202+64.57  
PARISH LOOP



 WETLANDS (2.93 AC)

 GUM SLOUGH

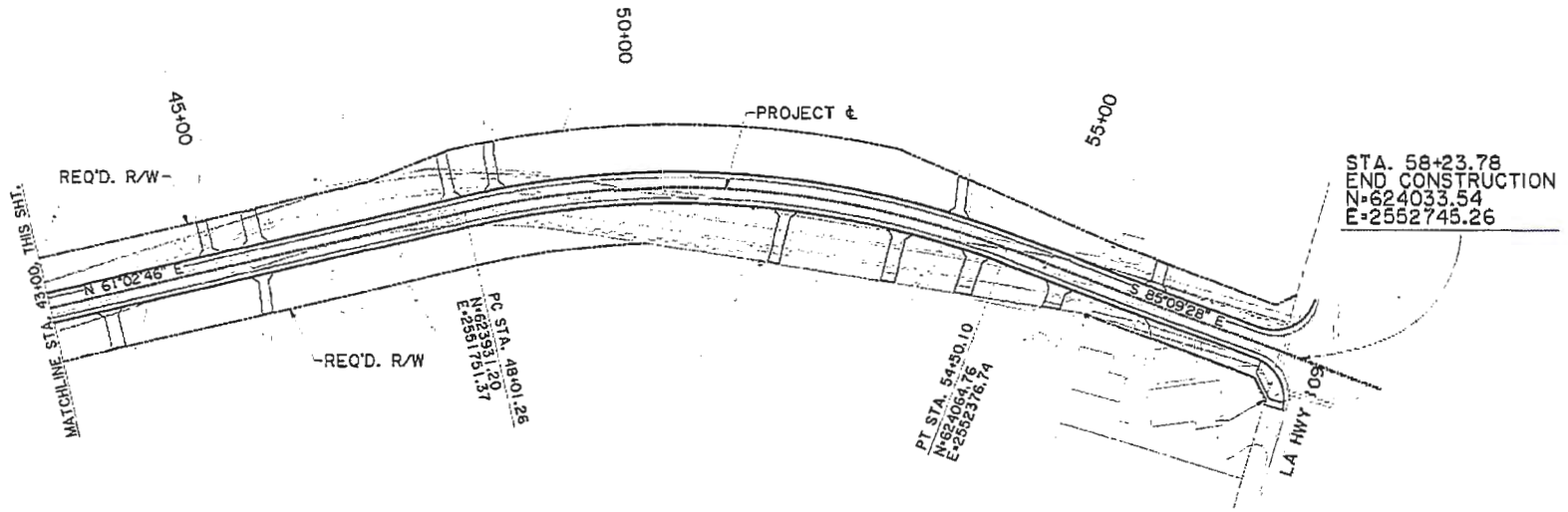
CONSTRUCTION FIGURES  
PROVIDED BY LANCON ENGINEERS, INC

NOT TO SCALE  
DIMENSIONS AS NOTED

**FIGURE 3  
PLAN VIEW**  
PERMIT APPLICATION  
CALCASIEU PARISH POLICE JURY  
NIBLETT'S BLUFF BRIDGE REPLACEMENT  
VINTON, LOUISIANA

Drawn By: CRH	Checked By: CBJ
Date: 08/09/18	Project No: 11482



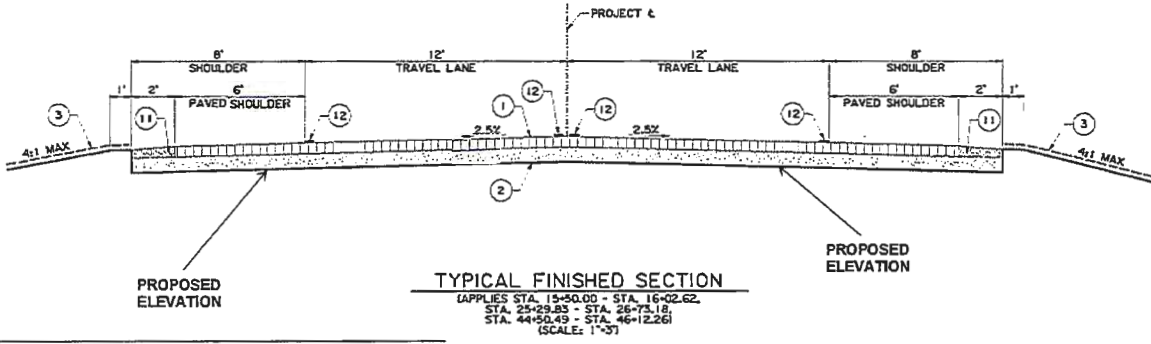
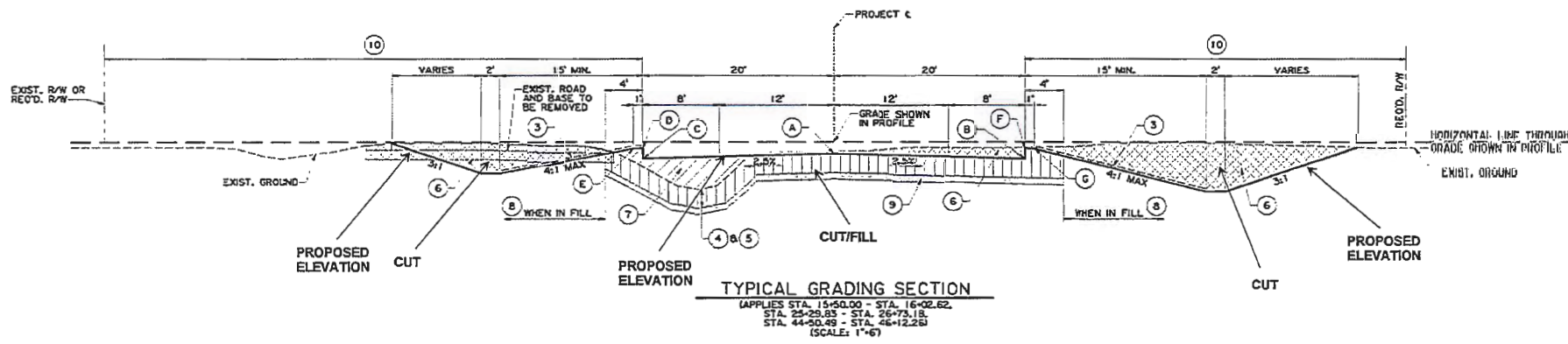


CONSTRUCTION FIGURES  
PROVIDED BY LANCON ENGINEERS, INC

NOT TO SCALE  
DIMENSIONS AS NOTED

**FIGURE 4**  
**PLAN VIEW**  
 PERMIT APPLICATION  
 CALCASIEU PARISH POLICE JURY  
 NIBLETT'S BLUFF BRIDGE REPLACEMENT  
 VINTON, LOUISIANA

Drawn By: CRH	Checked By: CBJ
Date: 08/09/18	Project No: 11482



**LEGEND:**

- ① ASPHALTIC CONCRETE TYPE 90 WCP (WEARING COURSE) 16" THICK (CONSTRUCT IN THREE (3) 2" LIFTS) (ITEM 502-01-P)
- ② CLASS D BASE COURSE (8" THICK) (SOIL CEMENT) (ITEM 302-02-030201)
- ③ EROSION CONTROL SYSTEM (TYPE C) (ITEM 720-01-02000)
- ④ GENERAL EXCAVATION (FOR UNDERCUTTING OF THE SUBGRADE) (2" AVG.) (NET SECTION) (ITEM 203-01-00200)
- ⑤ BORROW (FOR BACKFILLING UNDERCUTTING OF THE SUBGRADE) (NET SECTION) (ITEM 203-07-00400)
- ⑥ EXCAVATION (PLAN QUANTITY) (ITEM 203-01-00102)
- ⑦ EMBANKMENT (PLAN QUANTITY) (SELECTED SOILS) (ITEM 203-03-00102)
- ⑧ EMBANKMENT (PLAN QUANTITY) (USABLE SOILS) (ITEM 203-03-00102)
- ⑨ LIME TREATMENT (TYPE D) 16" THICK (EST. 8% BY VOLUME) (ITEM 304-04-00200)
- ⑩ HYDRO-SEEDING (FIBER MULCH INCLUDED) (ITEM 738-01-00100)
- ⑪ HOT MIX ASPHALT TREATED AGGREGATE SURFACE COURSE (HOT RAP) (THICKNESS VARIES) (10.03 CY/LF) (ITEM 401-03-00200)
- ⑫ PAVEMENT STRIPING

VALUE OF POINTS IN GRADING SECTION RELATIVE TO GRADE SHOWN ON PROFILE

LOCATION	ROADWAY RATE FT./FT.	RELATIVE GRADE (FEET)						
		A	B	C	D	E	F	G
NORMAL CROWN	0.062	-1.17	-1.67	-1.67	-0.62	-0.65	-0.65	+0.00

**TYPICAL SECTIONS**

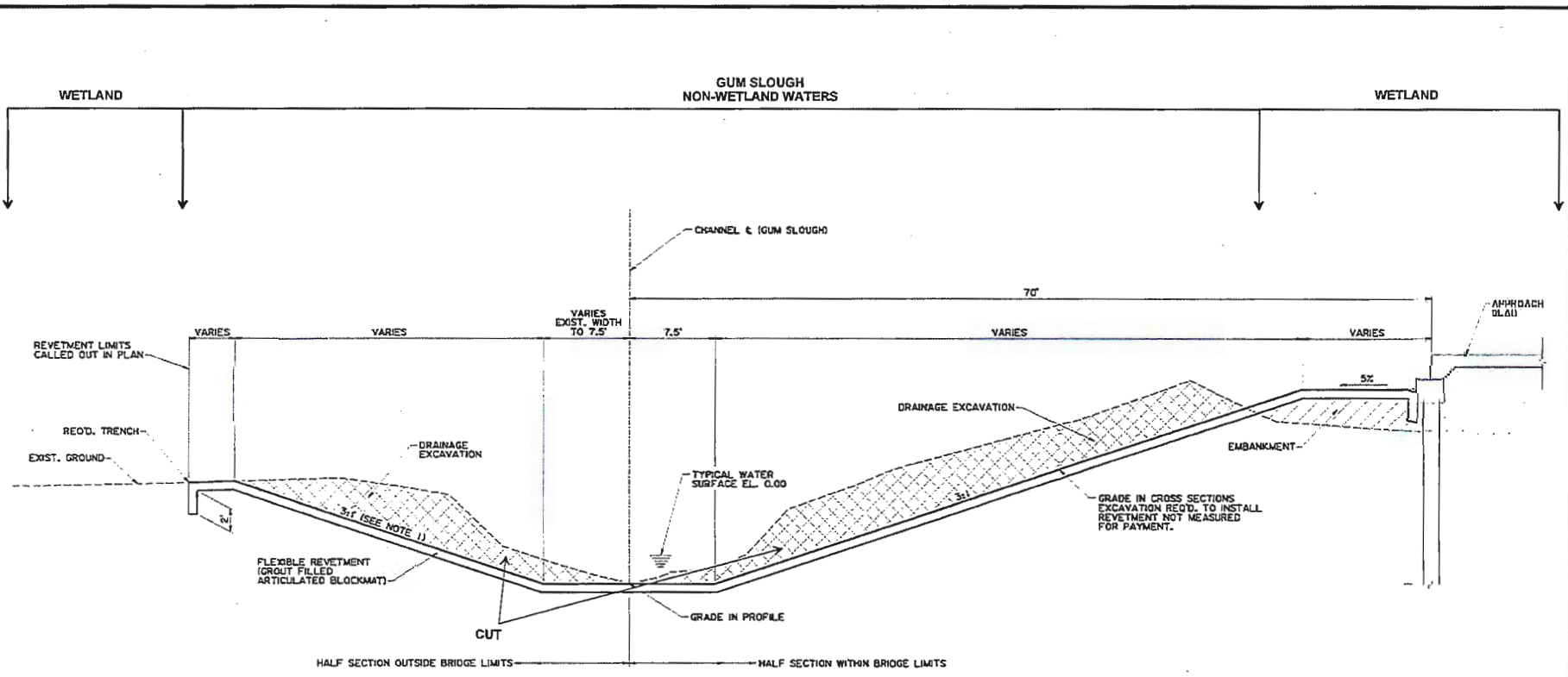


**FIGURE 5**  
**TYPICAL SECTIONS**  
 PERMIT APPLICATION  
 CALCASIEU PARISH POLICE JURY  
 NIBLETT'S BLUFF BRIDGE REPLACEMENT  
 VINTON, LOUISIANA

Drawn By: CRH	Checked By: CBJ
Date: 08/09/18	Project No: 11482

NOT TO SCALE  
 DIMENSIONS AS NOTED

CONSTRUCTION FIGURES  
 PROVIDED BY LANCON ENGINEERS, INC



**FINISHED SECTION  
GUM SLOUGH CHANNEL**  
(APPLIES TO STA. 4+85 TO STA. 8+25)  
N.T.S.

**NOTES:**

1. SIDE SLOPE VARIES FROM EXISTING TO 3:1 STA. 4+85 TO STA. 5+35. SIDE SLOPE VARIES 3:1 TO EXISTING STA. 7+75 TO STA. 8+25. REVETMENT APPLIES STA. 5+43.26 TO STA. 7+72.45.
2. BOTTOM WIDTH VARIES FROM EXISTING WIDTH TO 15' STA. 4+85 TO STA. 5+35. BOTTOM WIDTH VARIES FROM 15' TO EXISTING WIDTH FROM STA. 7+75 TO STA. 8+25.

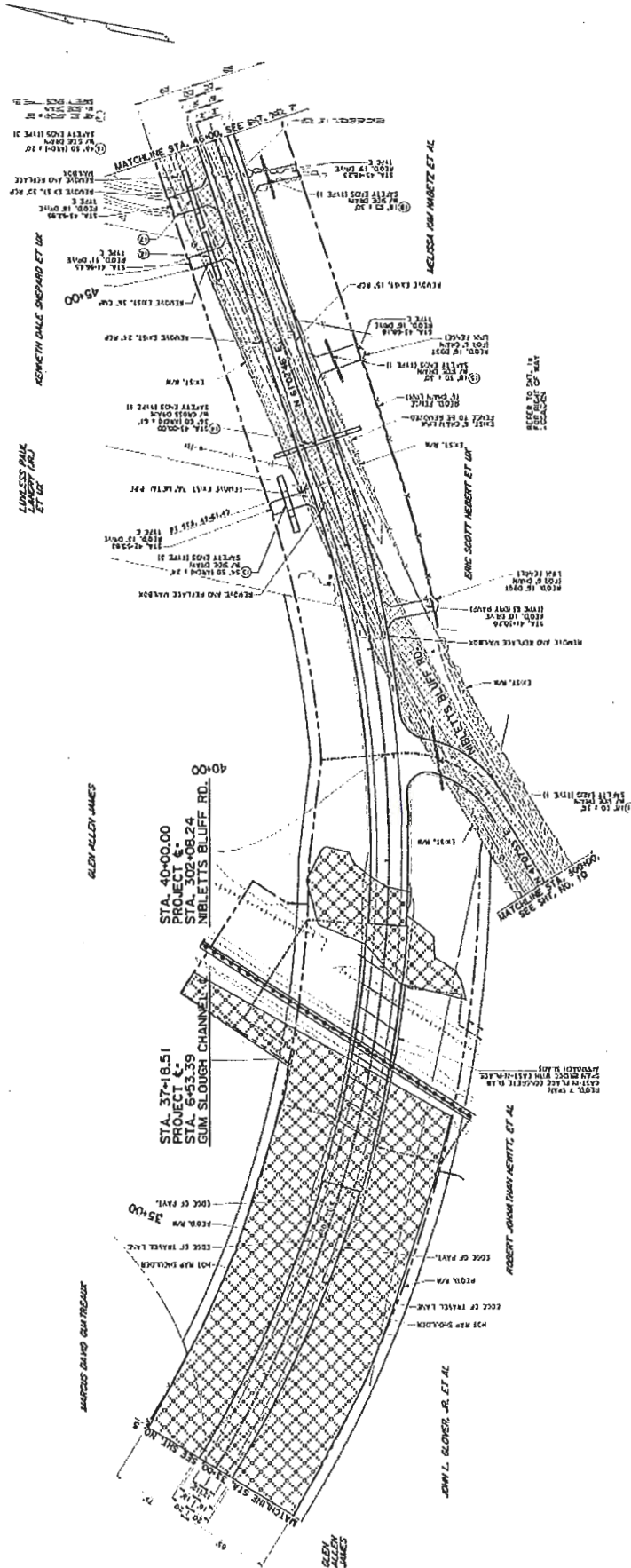
CONSTRUCTION FIGURES  
PROVIDED BY LANCON ENGINEERS, INC



NOT TO SCALE  
DIMENSIONS AS NOTED



**FIGURE 6**  
**TYPICAL CHANNEL SECTION**  
PERMIT APPLICATION  
CALCASIEU PARISH POLICE JURY  
NIBLETT'S BLUFF BRIDGE REPLACEMENT  
VINTON, LOUISIANA

Drawn By:	CRH	Checked By:	CBJ
Date:	08/09/18	Project No:	11482



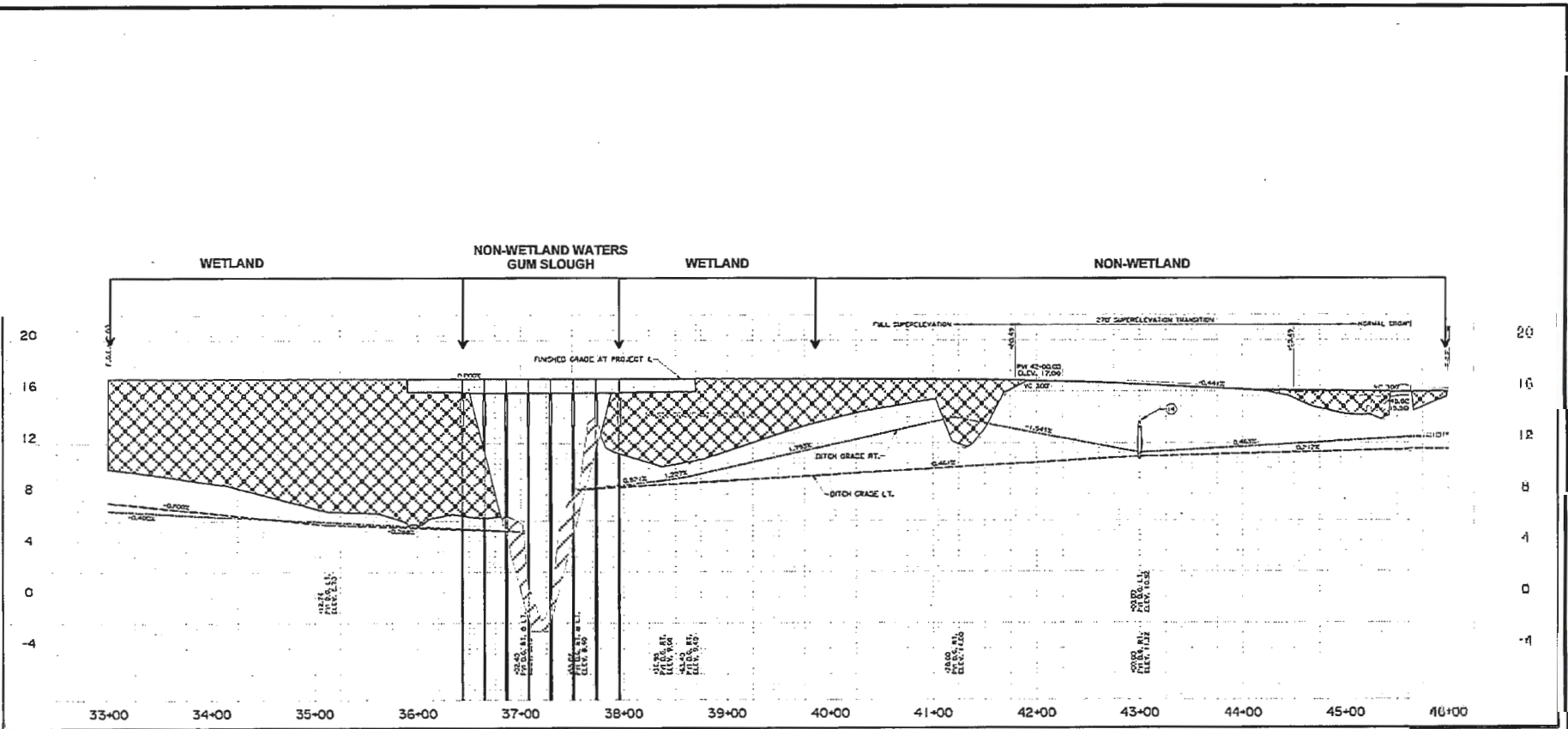
 WETLAND  
 GUM SLOUGH  
**CONSTRUCTION FIGURES PROVIDED BY LANCON ENGINEERS, INC**  
**NOT TO SCALE DIMENSIONS AS NOTED**


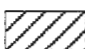


**FIGURE 7**  
**PLAN VIEW AT BRIDGE**  
 PERMIT APPLICATION  
 CALCASIEU PARISH POLICE JURY  
 NIBLETT'S BLUFF BRIDGE REPLACEMENT  
 Vinton, Louisiana


Drawn By: CRH  
 Checked By: CBJ  
 Date: 08/09/10  
 Project No: 11482





 FILL  
 CUT

**CONSTRUCTION FIGURES**  
**PROVIDED BY LANCON ENGINEERS, INC**  
**NOT TO SCALE**  
**DIMENSIONS AS NOTED**



**FIGURE 8**  
**PROFILE AT BRIDGE**  
 PERMIT APPLICATION  
 CALCASIEU PARISH POLICE JURY  
 NIBLETT'S BLUFF BRIDGE REPLACEMENT  
 VINTON, LOUISIANA

Drawn By: CRH	Checked By: CBJ
Date: 08/09/18	Project No: 11482